

Upgrade Your Project Portfolio Management

Wrike's project portfolio management (PPM) tools connect strategy, planning, execution, and results — all in one flexible platform.

Wrike's advanced tools for portfolio management help your team quickly assess every aspect of the projects you work on. Stay on top of your portfolio and encourage collaboration from one secure platform where you can store all your resources.



Plan with up-to-date insights:

Gain agility and optimize portfolios with our real-time PPM tool. Improve forecasting with real insights, not assumptions.



Break down silos:

Empower teams to remove silos and drive digital transformation with the best project portfolio management software.



Minimize your portfolio's risk:

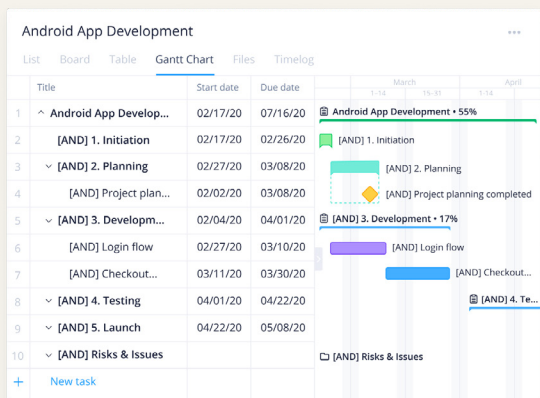
Get an accurate picture of effort involved, due dates, and available resources to minimize risk from the start.

Budgeting Scenarios				
List Board Table Gantt Chart Files Timelog				
	Total Score	Title	Planned Budget, \$	Start Date
1	AVG 2.7 2.7 ●	▼ Budgeting Scenarios	SUM 1,010,000	
2	AVG 3.4 3.4 ●	▼ Scenario 1	SUM 570,000	
3	3.0 ●	eCommerce Portal	400,000	01/03/2020
4	3.3 ●	Expense Tracking Software	120,000	10/03/2020
5	4.7 ●	GDPR Compliance	50,000	01/03/2020
6	AVG 3.7 3.7 ●	▼ Scenario 2	SUM 440,000	
7	3.3 ●	Expense Tracking Software	120,000	10/03/2020
8	4.7 ●	GDPR Compliance	50,000	01/03/2020
9	2.7 ●	New Data Warehouse	270,000	01/07/2020

Prioritize the right investments

Avoid miscommunication with customized request forms that capture value, budget, priority, and risk.

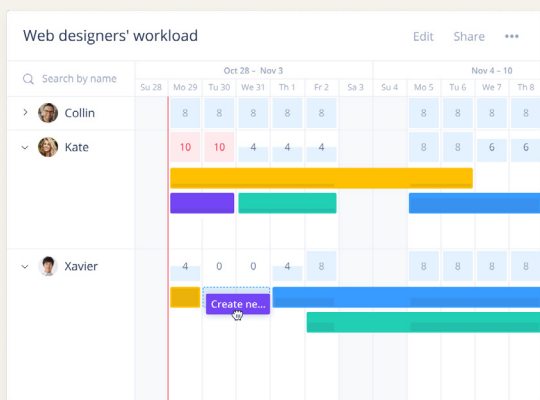
Organize project requests into programs and sort by timeline or impact. Make decisions based on predicted outcomes.



Accelerate project rollout

Use customizable templates to automate repeatable, scalable, and consistent processes throughout your organization.

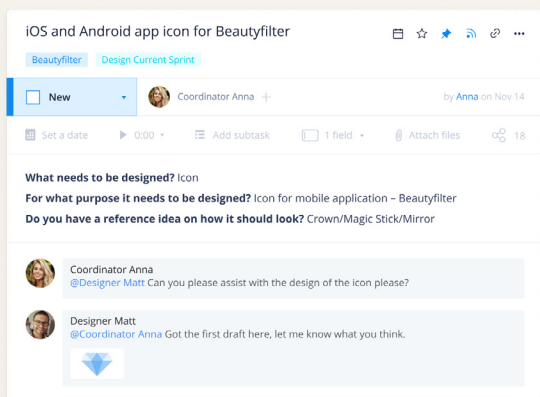
Get unparalleled visibility with PPM tools such as Gantt charts and Kanban boards, suitable for both Agile and Waterfall projects.



Improve planning

Keep track of deadlines, progress, and resources in one place to predict shortages and avoid delays. Use advanced insights for better forecasting.

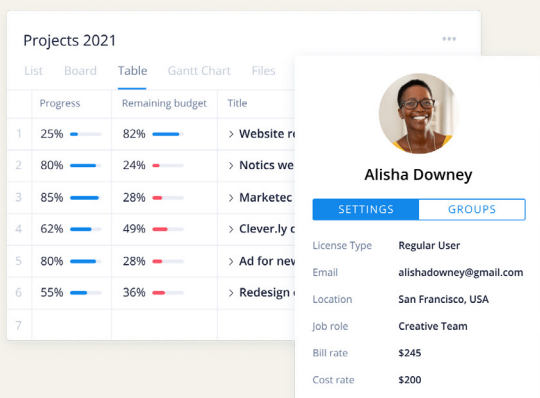
Wrike's PPM tool lets you improve quarterly results with detailed reporting, resource management, and simple time tracking.



Enable better collaboration

Drive results and keep up with the pace of change by enabling real-time collaboration across your organization.

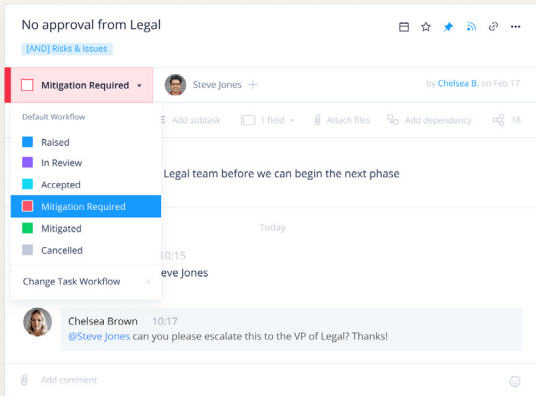
Wrike's easy-to-use PPM tool lets PMOs manage portfolios, check progress, and access vital data that supports smarter decisions.



Optimize resource capacity

Set projects up for success with accurate cost assessments, smarter budgeting, and straightforward time cards.

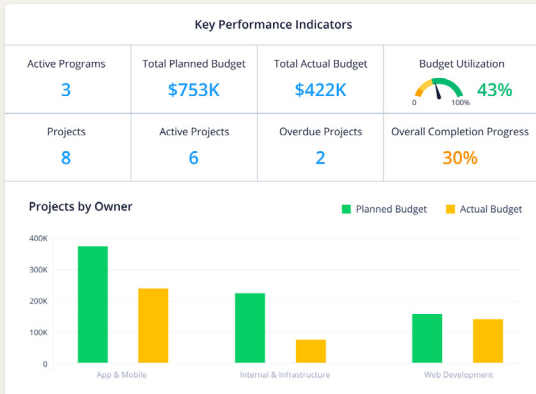
React quickly to changing business objectives and potential bottlenecks by reprioritizing projects as needed.



Stay informed of risks

Communicate potential risks and next steps to stakeholders with RAID logs, escalation workflows, and progress reports.

Deliver AI-based, automated risk reports to your inbox to pinpoint the biggest areas of concern at any time.



Get real-time performance data

Spend less time chasing down updates. Roll up task, project, and program financials and easily view progress, so you know where initiatives stand.

Track results with company OKRs, team goals, and portfolio or program-level KPIs, all with Wrike's PPM software.

Great teams deserve end-to-end solutions

Wrike's collaborative work management (CWM) solution acts as a centralized hub for all your team's work.

Our best-in-class platform includes features such as:



Dynamic request forms

so you have all project details and can start work immediately



Custom workflows

so your team can work the way they want



Automated approvals

to expedite work from stage to stage



Sharable team dashboards

and calendars updated in real time so that all stakeholders can view project progress



Cross-tagging to increase project visibility and end-to-end transparency



Visual, online proofing

to centralize asset feedback and speed up approvals



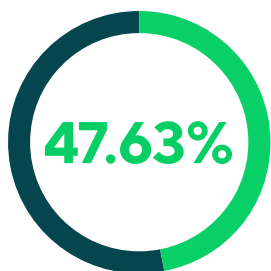
Built-in Machine learning and AI, so your team can focus on the work that matters most



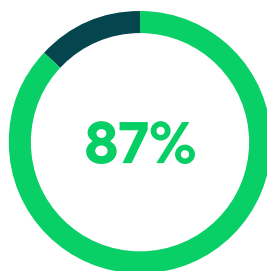
400+ integrations

so your team can transfer and sync data in a few clicks

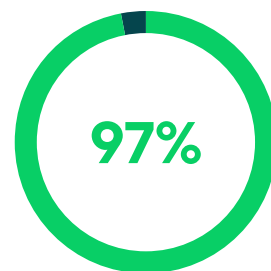
Wrike by the numbers



Wrike customers' average increase
in productivity



of Wrike users said they were able
to achieve improved clarity,
alignment, and visibility across teams
and projects using Wrike



of Wrike users would recommend
Wrike to a friend or colleague

Discover why leading brands
such as [Siemens](#), [Walmart Canada](#),
and [KitchenAid](#) rely on Wrike
to get work done and scale.

Plus, see why Wrike is the most
versatile CWM and offers
the most robust feature set.

[Start free trial](#)

